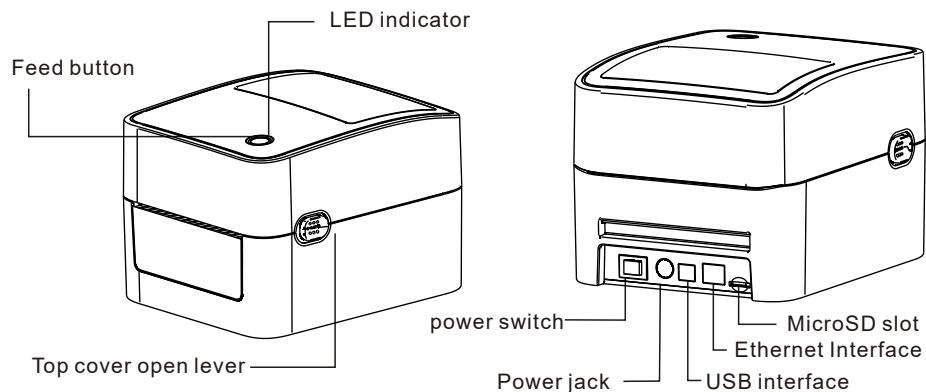


Quick Installation Guide

Printer overview



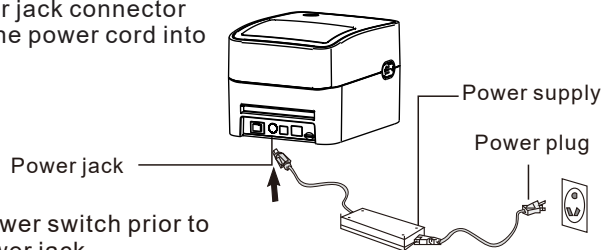
Note: The interface picture in the quick start guide is for reference only. Please refer to the product specification for the interfaces availability.

Printer Installation

1. Arrange this printer on a reliable flat surface and make sure the power switch is off.

2. Connect the printer to a computer mainframe with a USB cable.

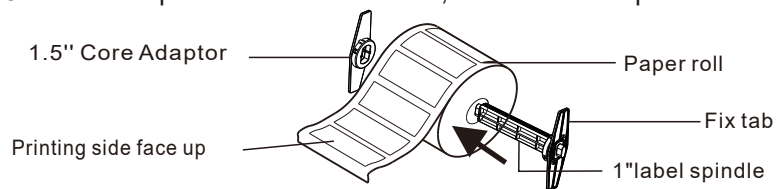
3. Plug the power cord into the power jack connector at the rear of the printer, then plug the power cord into a properly grounded outlet.



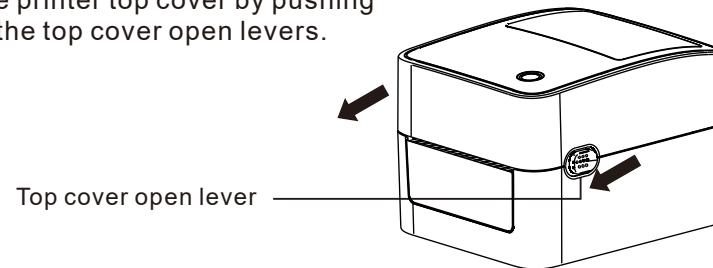
Note: Please switch OFF printer power switch prior to plug in the power cord to printer power jack.

Loading the label

1. Insert a 1" label spindle into a paper roll (* If your paper core is 1"inch, remove the 1.5" core adaptor from the fixed tab, use the label spindle directly).



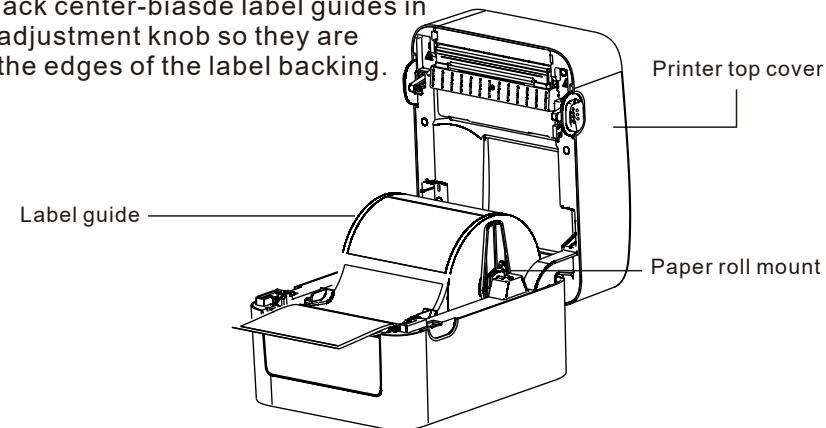
2. Open the printer top cover by pushing forward the top cover open levers.



3. Orient a roll of paper on the paper roll mount.

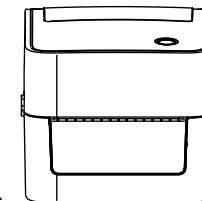
4. Feed the paper, printing side face up, through the label guide and pass over the platen.

5. Adjust the black center-biasde label guides in or out turning adjustment knob so they are slightly touch the edges of the label backing.



6. Close the printer top cover slowly and make sure the cover locks latch securely.

7. Use the "Diagnostic tool" to set the media sensor type and calibrate the selected sensor. (See "Diagnostic tool" and "Sensor Calibrate" in the next page).



Note:

1. Please calibrate the gap/black mark sensor when changing media.
2. Failure to securely close and lock the cover will result in poor print quality.

Button functions

(1) Feed labels

When the printer is ready, press the button to feed one label to the beginning of next label.

(2) Pause the printing job

When the printer is printing, press the button to pause a print job. When the printer is paused the LED will blink blue. Press the button again to continue the printing job.



AL-D460

Thermal-Labelprinter

Quick Start Guide

Drivers and Manuals available at:

<https://www.artdev.de/etikettendrucker/al-d460/>